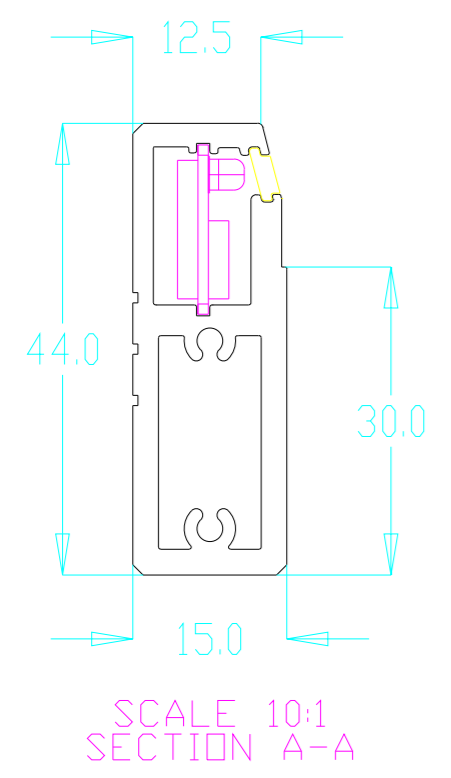
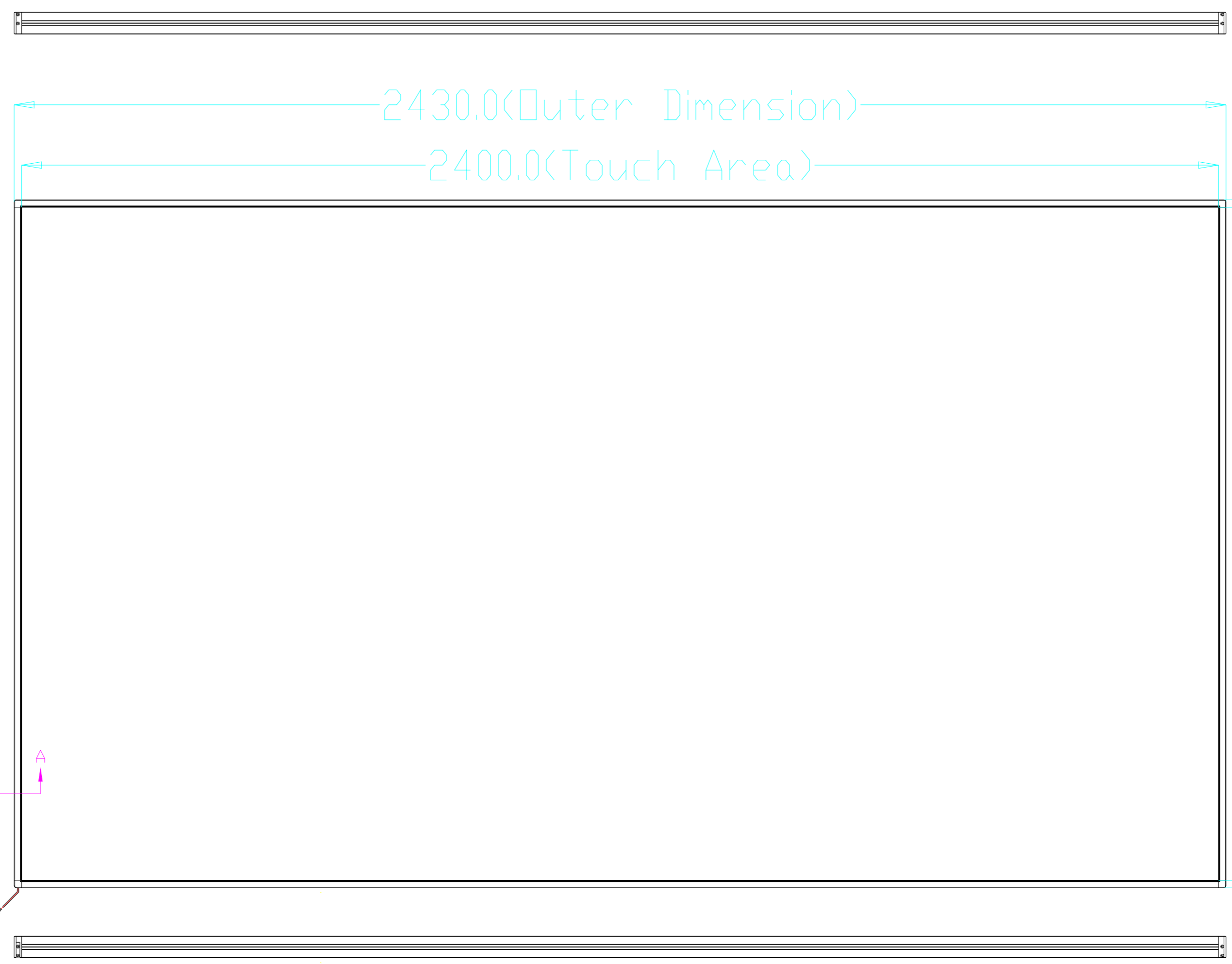


LOGO	REV.	Date	Changes
△1			
△2			
△3			

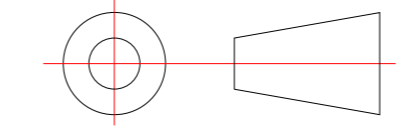


USB线2.5米

TOLERANCES  
(UNLESS OTHERWISE STATED)

DECIMALS	ANGLES	±0.5°
>2000mm	±2.00mm	
1600 < x ≤ 2000mm	±1.20mm	
1200 < x ≤ 1600mm	±0.80mm	
800 < x ≤ 1200mm	±0.50mm	
400 < x ≤ 800mm	±0.30mm	
120 < x ≤ 400mm	±0.20mm	
30 < x ≤ 120mm	±0.20mm	
≤ 30mm	±0.15mm	

THIRD ANGLE PROJECTION



MODEL NO.		SCALE	1:1	NOTES:
PART No.		REV.	1.0	
PART NAME		SIZE	FREE	
MATERIAL		SHEET	1/1	
SURFACE		CHK'D		
DRAWN		APP'D		